

Objectif

Acquire the knowledge to control and/or set up a mobile crane while mastering the risks generated and the responsibilities of the various stakeholders.

Lattice boom cranes are not covered by this training

Version 09/2022

Method

Didactic
Demonstrative
Participative

Supports

Slideshow,
BY CN Lifting directive
INRS and UFL booklet
Videos
Mobile crane catalogue and
datasheets

Animation

1 Matform trainer

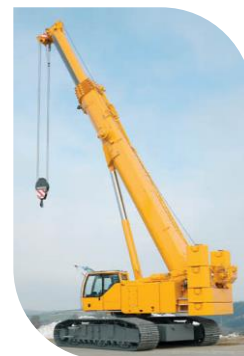
Location

Presential or distance learning

At training end,

the learner is able to

- 1/ choose a mobile crane best suited to the site constraints and the needs of a lifting operation to be organised
- 2/ advise on the creation of an installation plan integrating the technical characteristics of the lifting equipment and the site constraints
- 3/ know the steps involved in a suitability study
- 4/ alert the stakeholders to the risks and points of vigilance related to the use of mobile cranes
- 5/ know the supporting documents for carrying out a suitability survey and a request form for a mobile crane



Additional informations



Target audience:

Employees who are likely to order / set up a mobile crane, whether it is cross rented or from owned fleet



Headcount:

Group of 10 people (minimum 8)



Prerequisites:

None



Duration:

Presential : 7 hours
Remote learning : 7 hours splitted into 3 parts of 2x 2 and ½ h ; 1x 2hours



in room :

- Course 3 h 45
- Practical work 2 h 30
- 45 min quiz at training's end



Resources:

Meeting room (presential mode), Virtual meeting room (distance learning mode), Trainer, Exercices, Videos, Models



People with disabilities:

We study all disability situations on a case-by-case basis in order to consider integration into the training. If not, we provide referral to appropriate authorised training organisation.



Registration method and access deadline:

To matform@bouygues-construction.com via HR or HS manager, Registration possible until the day before the training.



Related training courses:

This training can be supplemented by:

- ✓ Lifting supervisor
- ✓ Lifting Appointed Person
- ✓ Lifting card design

Essential BOUYGUES CONSTRUCTION covered during this training

we ♥ life	
	Shared innovation

What our trainees said

2021 : 53 opinions



96 %



95 %



95 %



96 %

